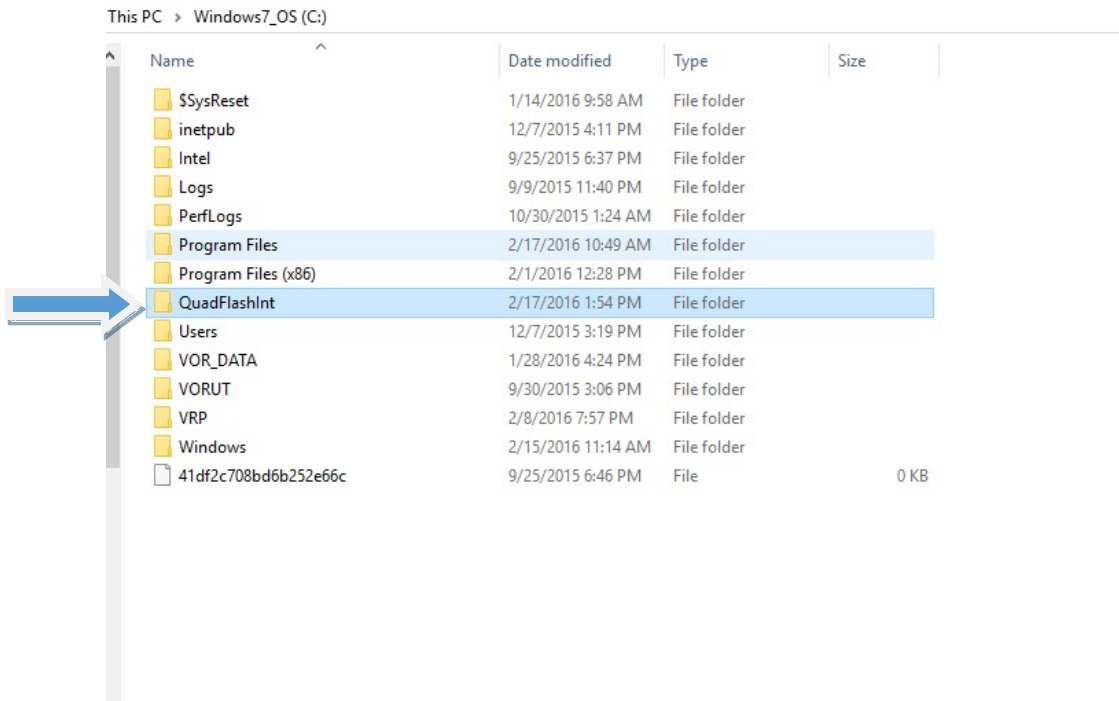


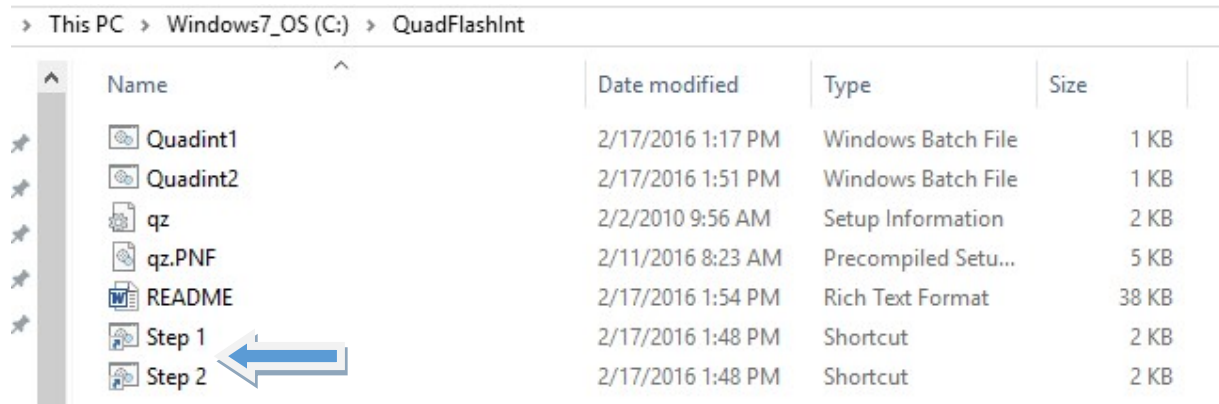
These are directions for installing the Quadzilla flasher program on a Windows 10 machine.

Put the unzipped Quadzilla folder in your C:\ directory so it should look like c:\QuadFlashInt\



Double Click the newly Created “QuadFlashInt” folder to open it.

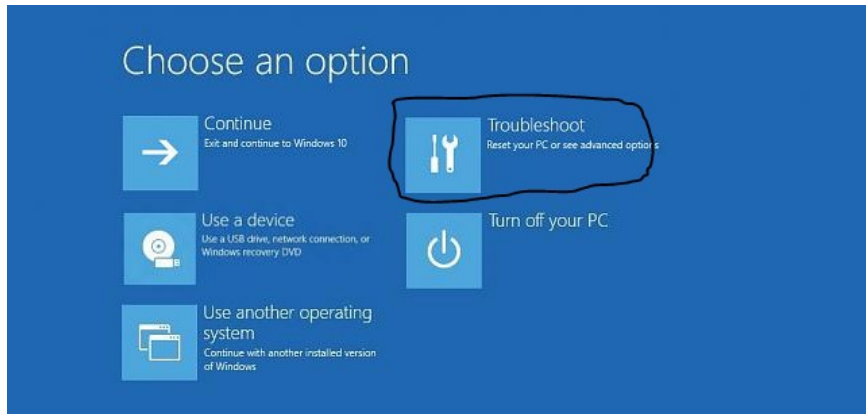
With the QuadFlashInt folder open you will see 2 shortcuts, Step1 which will reboot your machine, and Step2 which will prompt the user to install the driver for the Quadzilla Tuner.



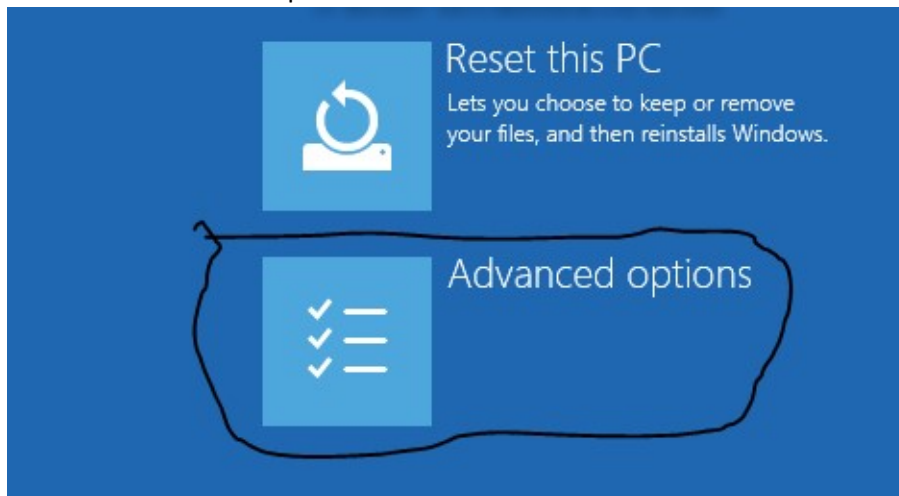
Step 1.

ENSURE you Save and Close all documents and Programs that are open, then double Click the Step 1 Shortcut. Your computer will start into recovery mode,

Select “troubleshoot”



Then click “Advanced Options”



Next Click “Startup Settings”



Select “reset” and wait for windows to prompt you to enter a number. Type “7” to disable driver signing.



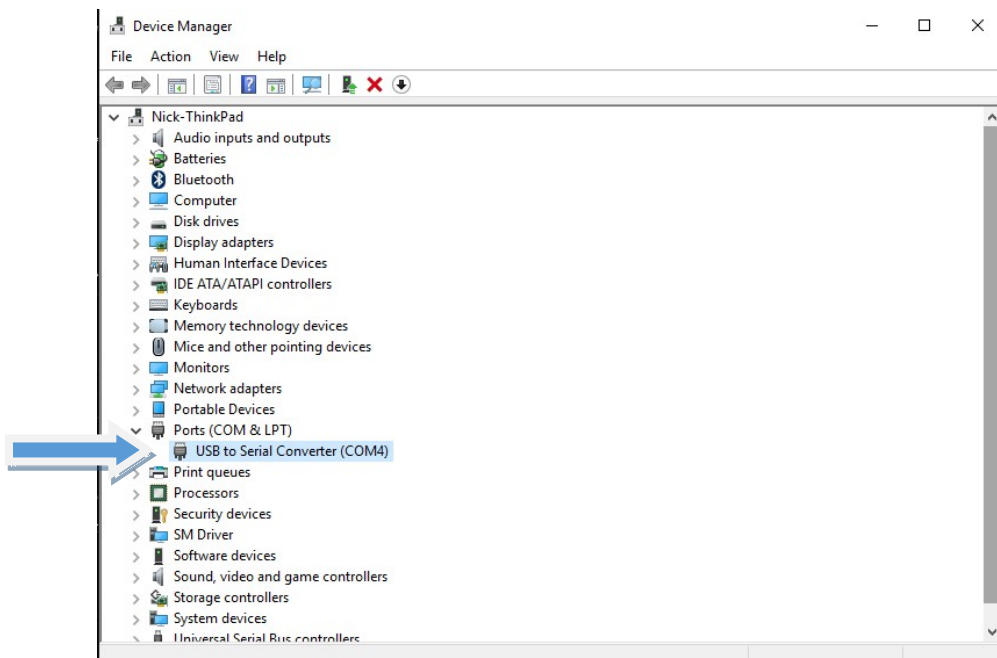
Once your Computer Reboots Reopen the README File and Continue with Step 2.

Step 2.

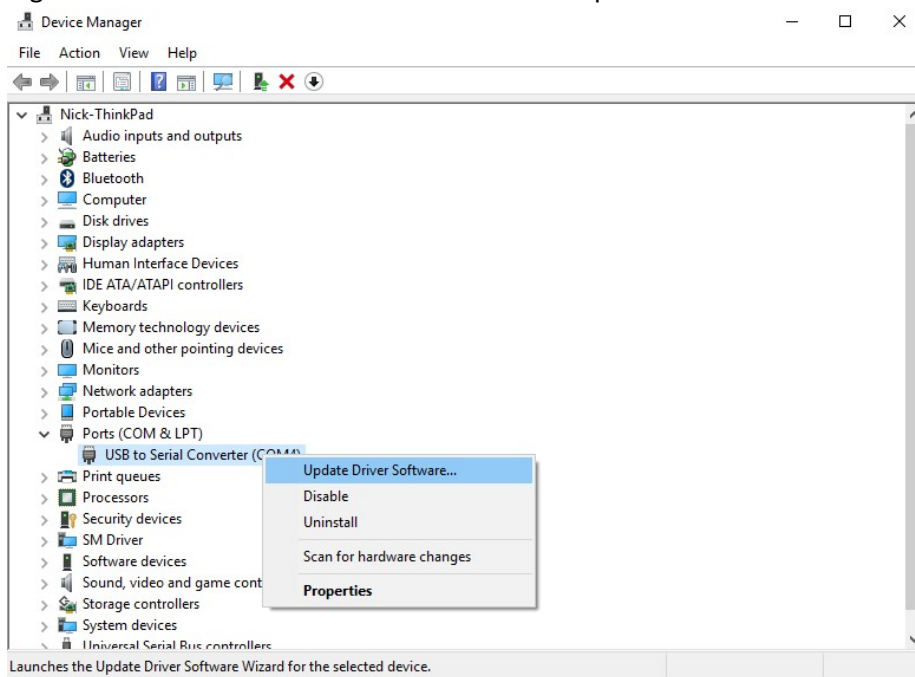
Plug in your Quadzilla Unit to the USB port of the Computer

Reopen the QuadFlashInt Folder and double click Step 2 shortcut

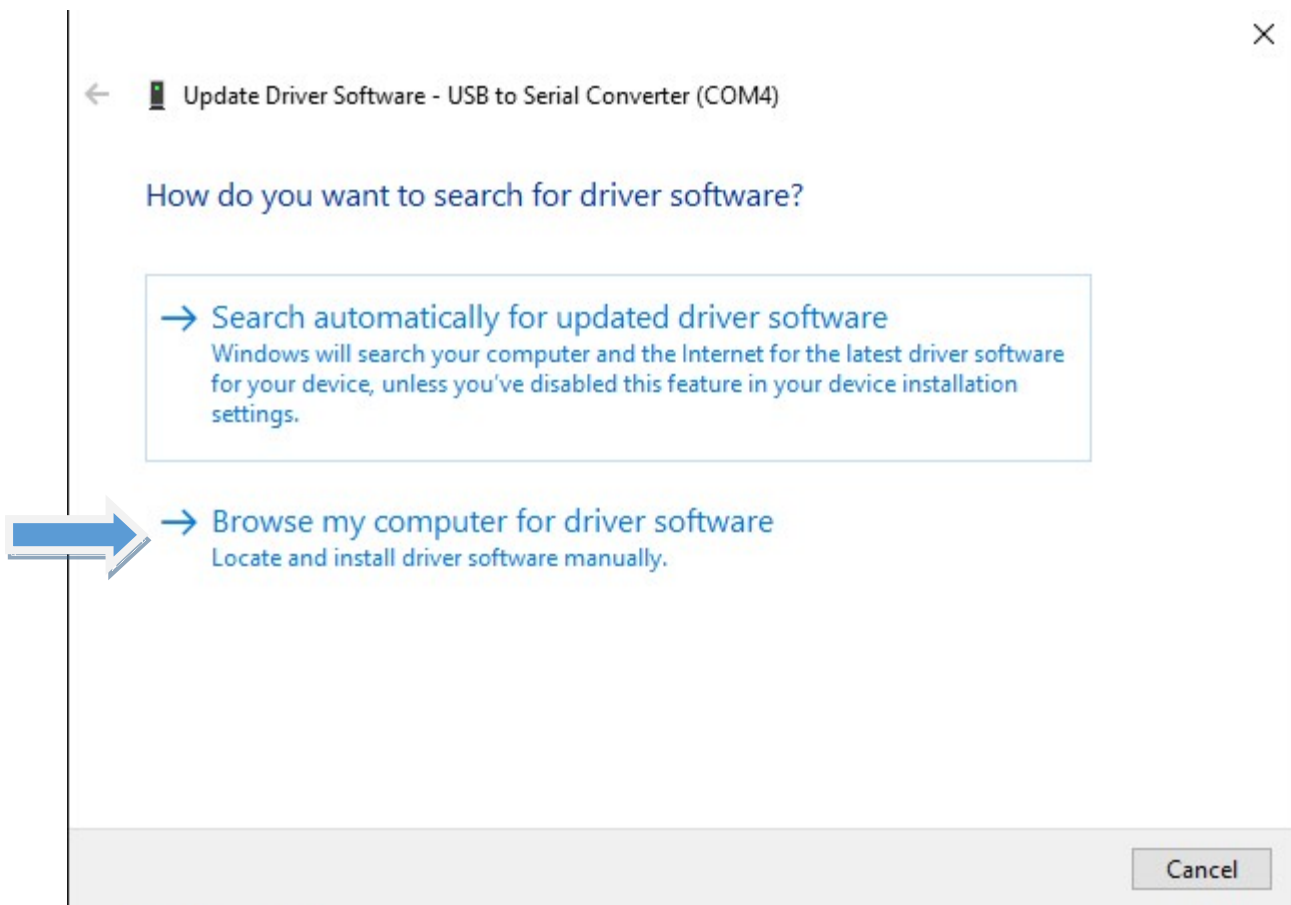
Navigate to the “Ports (COM & LPT)”



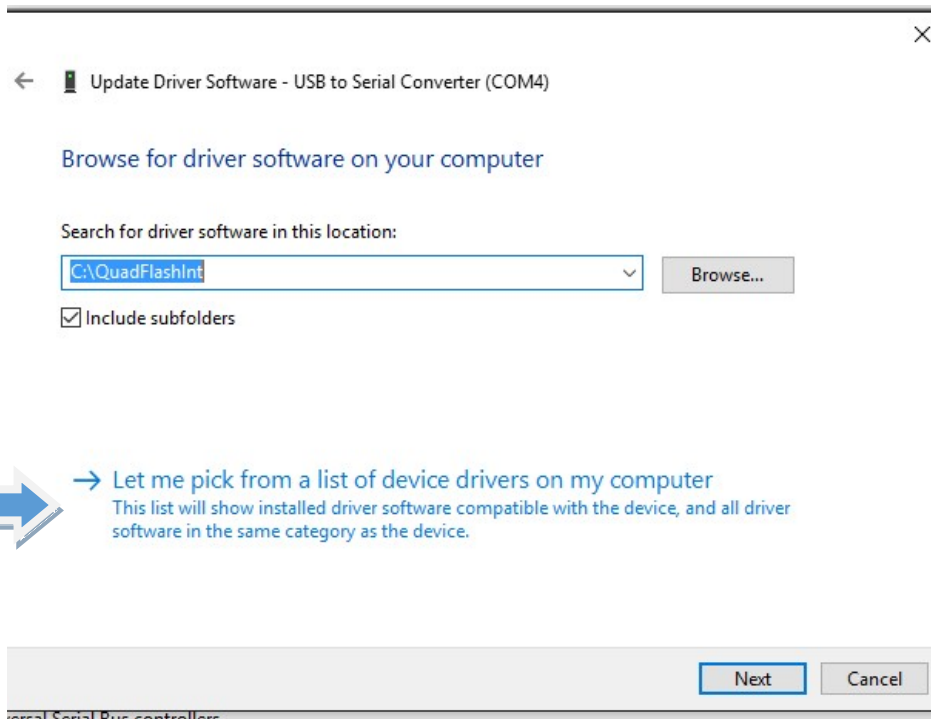
Right Click “USB to Serial Converter “ and click “Update Driver Software...”



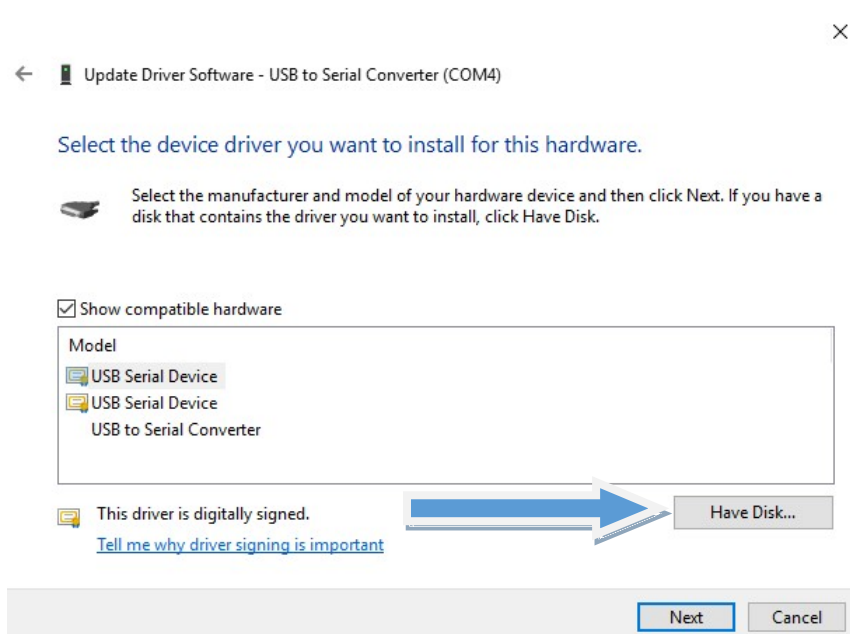
Select “Browse my computer for Driver Software”



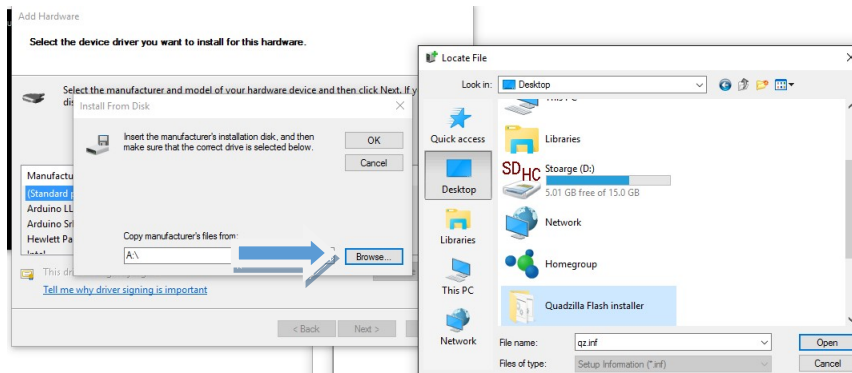
Choose “Let me Pick from a List of Device Drivers On My Computer”



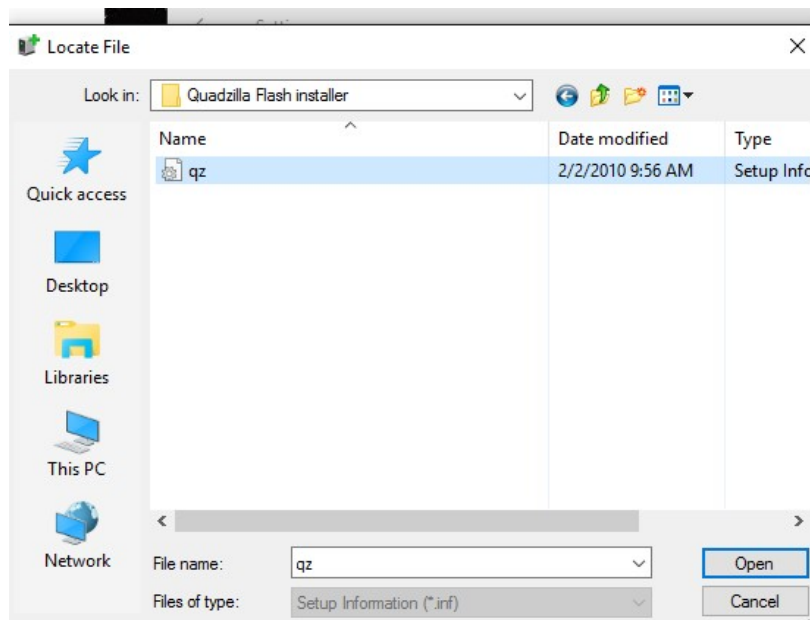
Choose “Have Disk” Click “Next”



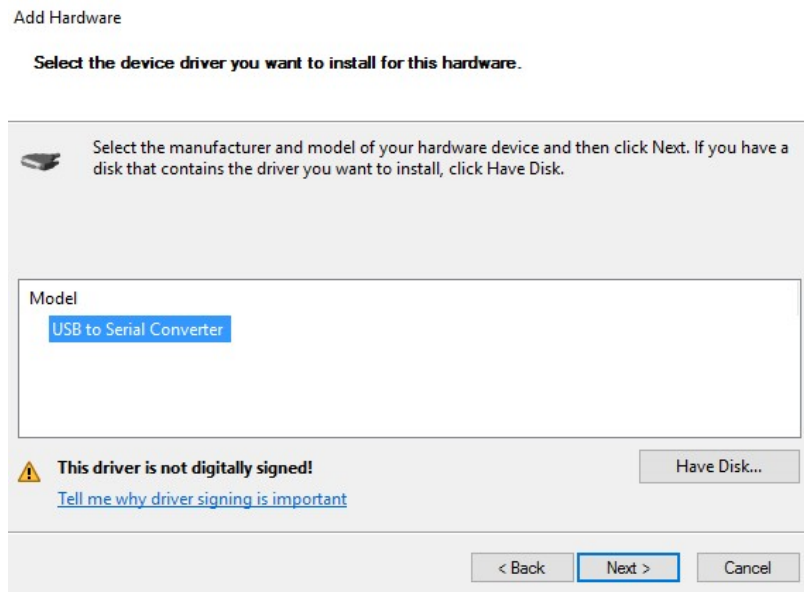
Choose “Browse” Then Navigate to the c:\quadflashint\ your unzipped folder. Typically you would click “This PC” then double click the folder “quadflashint”



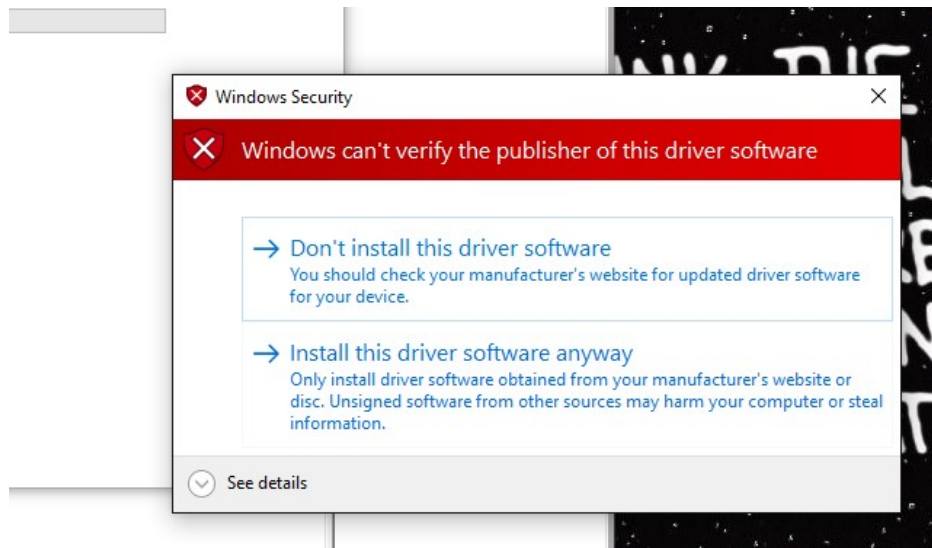
Select QZ.inf from the Quadflashint folder and click “Open”



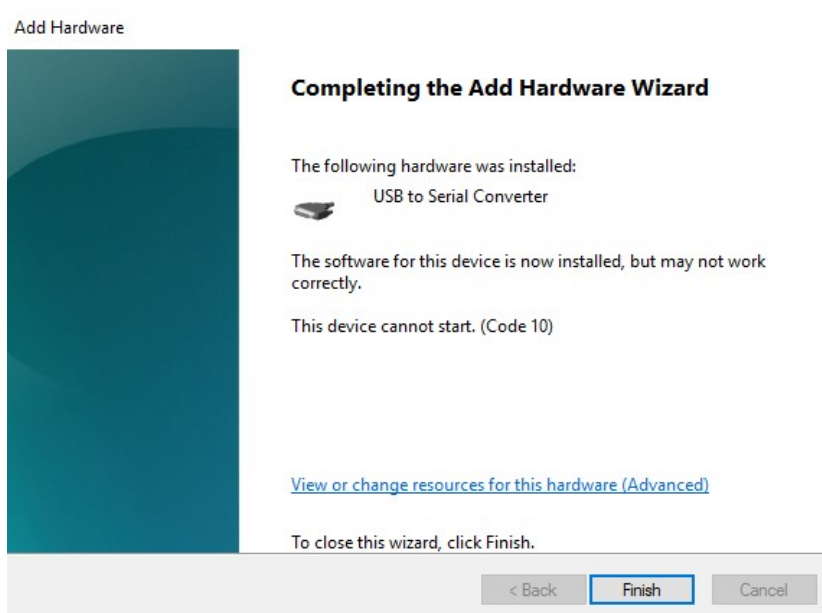
Click Next to Install the Driver



Click “Install this driver Software Anyways” when the window pops up”



Once it is done you can click “finish” to complete the install of the driver.



Step 3.

- Launch the Quadzilla tune you want to load to your Quadzilla Tuner.
- Verify that when you click “Get information from module” it finds your tuner.
- Lastly Click “Update Module” to flash your tuner with the new tune.

